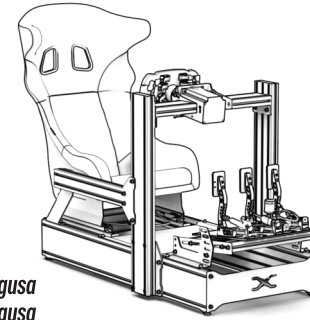


Assembly Manual Cockpit AX160

Assembly items for your cockpit:

Allen Wrench 5mm	-01 un	Washer 8mm	-80 un
Allen Wrench 6mm	-01 un	Washer 6mm	-08 un
Big Nylon Clamp	-06 un	Bracket 40×40mm	-08 un
Small Nylon Clamp	-06 un	Bracket 40×120mm	-02 un
Allen Screw 8×40mm	-12 un	Bracket 40×160mm	-02 un
Allen Screw 8×16mm	-100 un	Leveling Feet	-04 un
T nut	-66 un	End Cap 40×80	-01 un
Allen Screw 6×20mm	-08 un	End Cap 40×40	-02 un
Flat Head Allen	-08 un	End Cap 40×120	-02 un
Screw 8×16mm	-08 un	Corner bracket Cap	-02 un



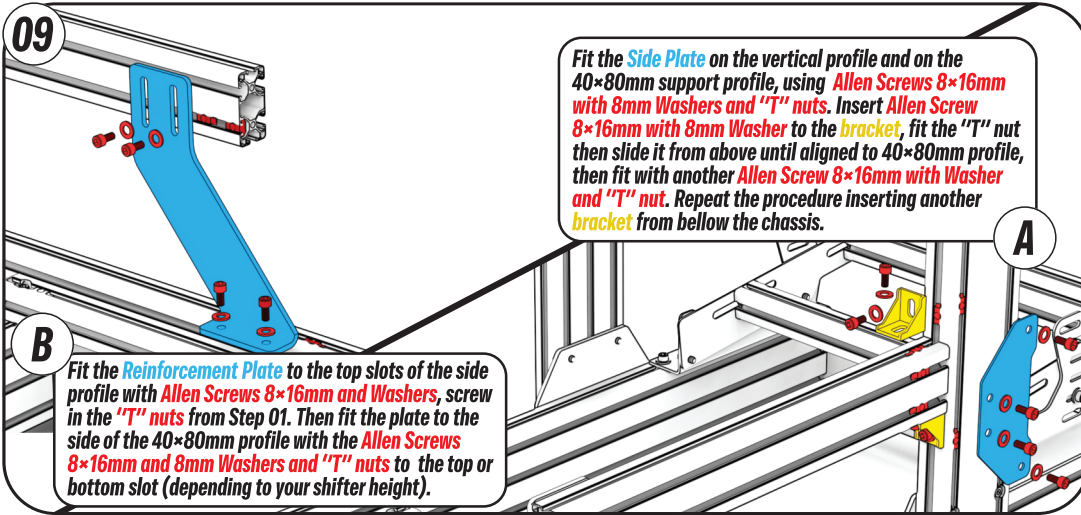
[/extremesimracingusa](https://www.instagram.com/extremesimracingusa)
[/extremesimracingusa](https://www.facebook.com/extremesimracingusa)
[extremesimracing](https://www.youtube.com/channel/UC...)
www.extremesimracing.com

EXTREME
SIMRACING

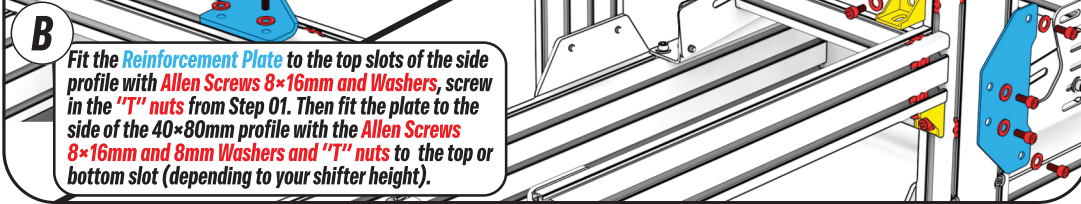


Follow the steps exactly as they are described in the manual. Any damage that may be caused by assembly error will be the responsibility of the customer.

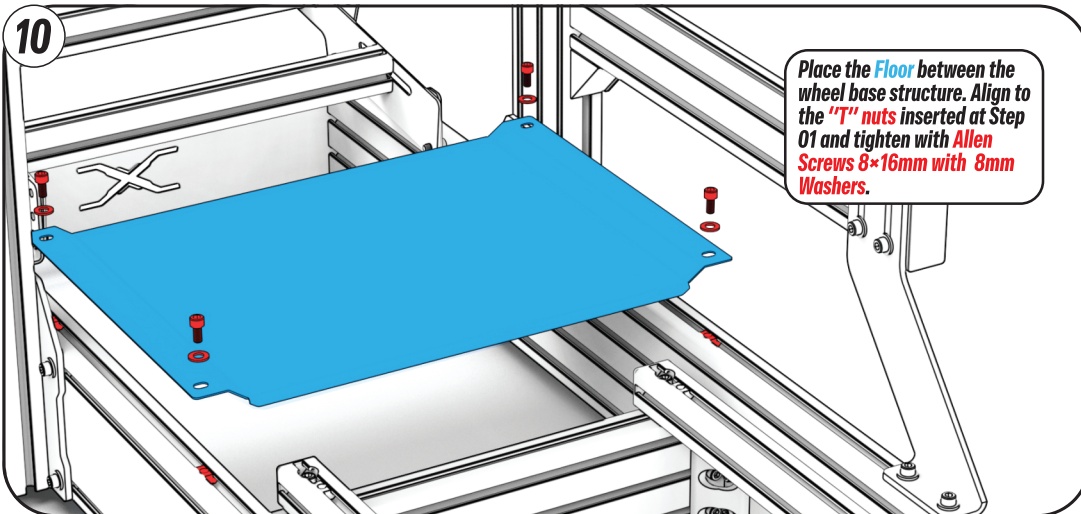
Tip: Unbox all parts before assembly. Some T nuts must be inserted way before they are used!



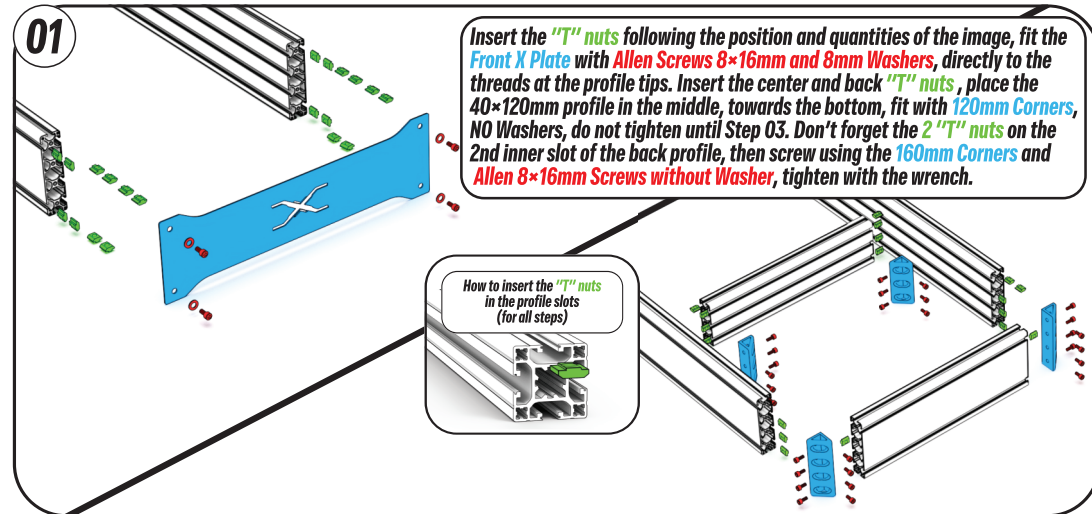
09
Fit the **Side Plate** on the vertical profile and on the 40×80mm support profile, using **Allen Screws 8×16mm with 8mm Washers and "T" nuts**. Insert **Allen Screw 8×16mm with 8mm Washer** to the **bracket**, fit the **"T" nut** then slide it from above until aligned to 40×80mm profile, then fit with another **Allen Screw 8×16mm with Washer and "T" nut**. Repeat the procedure inserting another **bracket** from below the chassis.



B
Fit the **Reinforcement Plate** to the top slots of the side profile with **Allen Screws 8×16mm and Washers**, screw in the **"T" nuts** from Step 01. Then fit the plate to the side of the 40×80mm profile with the **Allen Screws 8×16mm and 8mm Washers and "T" nuts** to the top or bottom slot (depending to your shifter height).

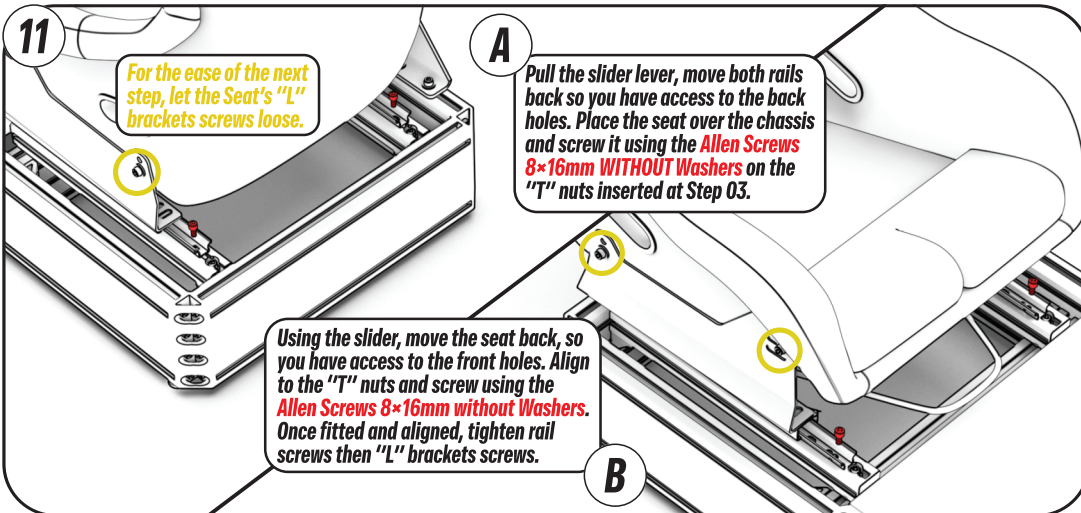


10
Place the **Floor** between the wheel base structure. Align to the **"T" nuts** inserted at Step 01 and tighten with **Allen Screws 8×16mm with 8mm Washers**.



01
Insert the **"T" nuts** following the position and quantities of the image, fit the **Front X Plate** with **Allen Screws 8×16mm and 8mm Washers**, directly to the threads at the profile tips. Insert the center and back **"T" nuts**, place the 40×120mm profile in the middle, towards the bottom, fit with **120mm Corners**, **NO Washers**, do not tighten until Step 03. Don't forget the **2 "T" nuts** on the 2nd inner slot of the back profile, then screw using the **160mm Corners and Allen 8×16mm Screws without Washer**, tighten with the wrench.

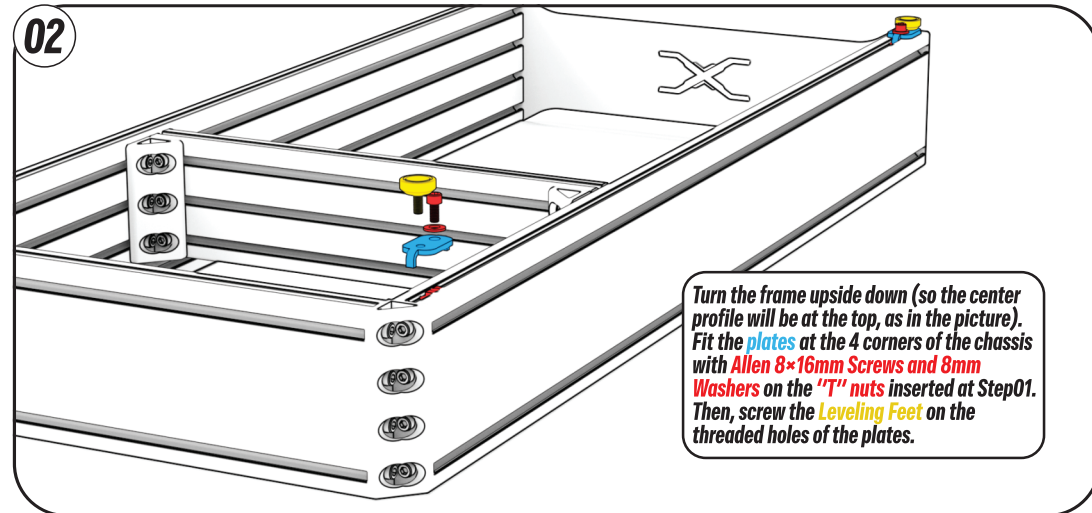
How to insert the **"T" nuts** in the profile slots (for all steps)



For the ease of the next step, let the Seat's **"L" brackets** screws loose.

A
Pull the slider lever, move both rails back so you have access to the back holes. Place the seat over the chassis and screw it using the **Allen Screws 8×16mm WITHOUT Washers** on the **"T" nuts** inserted at Step 03.

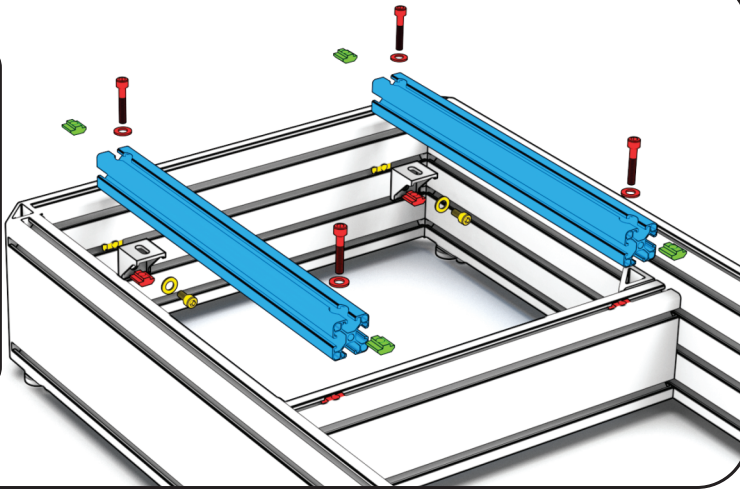
Using the slider, move the seat back, so you have access to the front holes. Align to the **"T" nuts** and screw using the **Allen Screws 8×16mm without Washers**. Once fitted and aligned, tighten rail screws then **"L" brackets** screws.



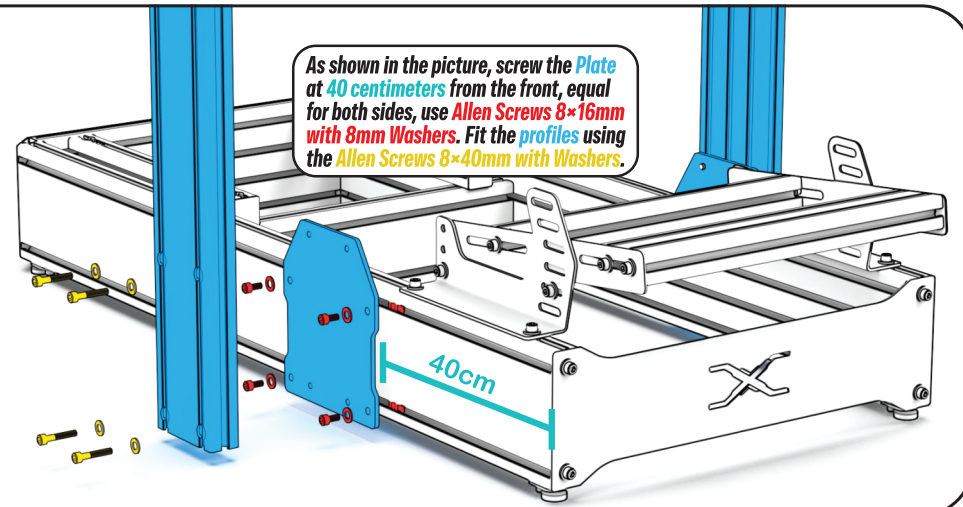
02
Turn the frame upside down (so the center profile will be at the top, as in the picture). Fit the **plates** at the 4 corners of the chassis with **Allen 8×16mm Screws and 8mm Washers** on the **"T" nuts** inserted at Step 01. Then, screw the **Leveling Feet** on the threaded holes of the plates.

03

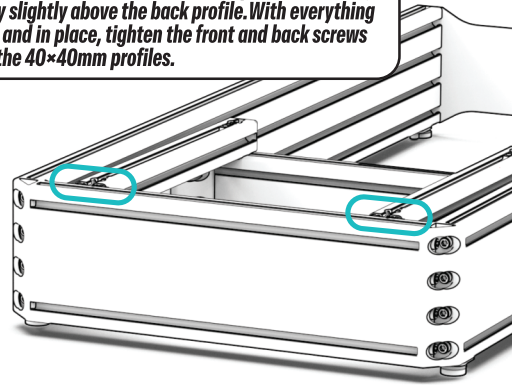
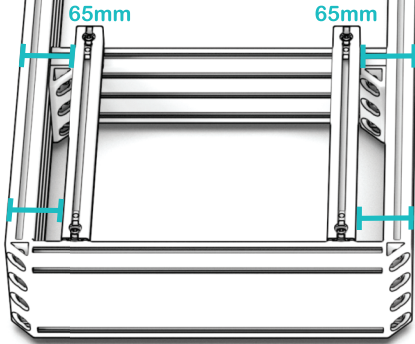
Fit the small Corner Brackets with the Allen Screws 8×16mm, 8mm Washers and "T" nuts from Step 01. Place the 40×40mm profiles, insert 2 "T" nuts on top of each. Pull central profile so it aligns to the 40×40mm profile front holes. Using Allen Screws 8×40mm and Washers, screw the front on the central profile "T" nuts, and the back to other "T" nuts, fitting the back nuts in the brackets, let them loose. Tighten the screws of the 120mm Corner Brackets of the central profile from Step 01.

**06**

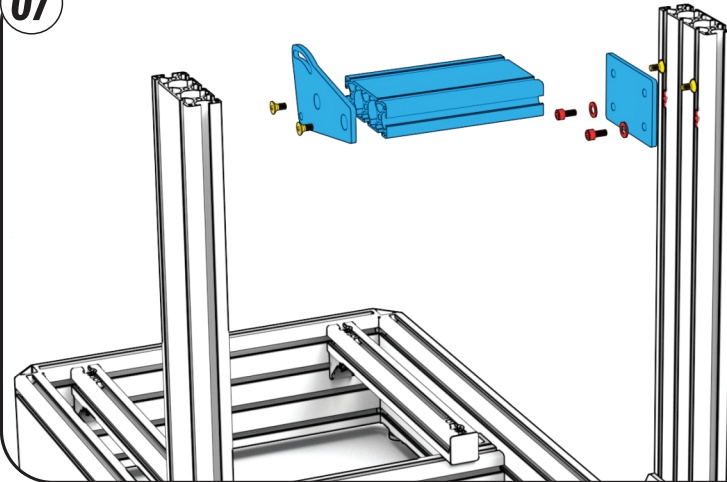
As shown in the picture, screw the Plate at 40 centimeters from the front, equal for both sides, use Allen Screws 8×16mm with 8mm Washers. Fit the profiles using the Allen Screws 8×40mm with Washers.

**04**

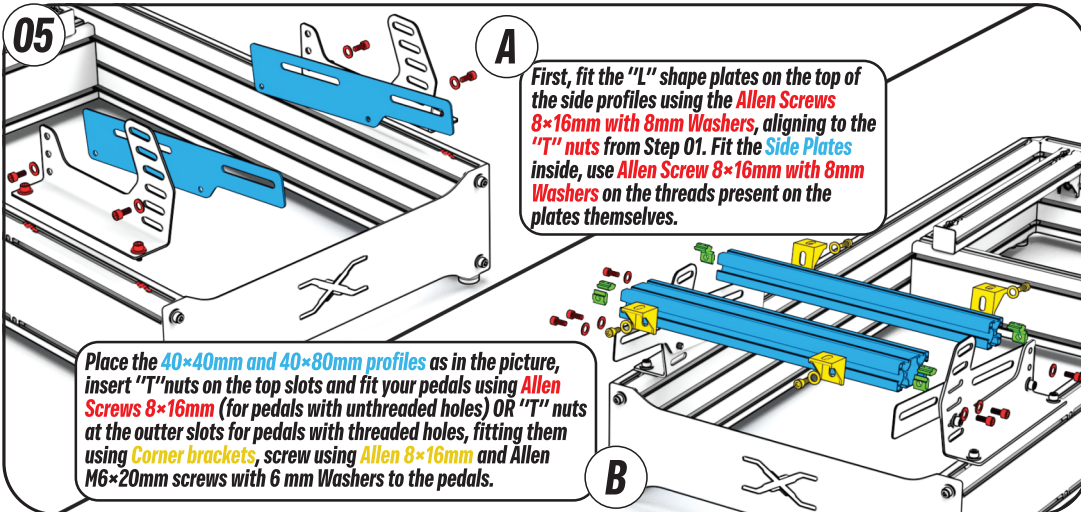
Place the 40×40mm profiles parallel with each other, with 65 mm from the outer profile side as in the picture. Adjust the height of the back of the 40×40mm profiles, in a way they stay slightly above the back profile. With everything checked and in place, tighten the front and back screws holding the 40×40mm profiles.

**07**

As shown, place the plate (square) screwing its holes with cavity to the threads of the 40×160mm short profile (flat side upwards), using Flat Head Allen Screws 8×16mm with 8mm Washers from inside, fit "T" nuts to its tips then fit the assembly to the vertical profile. Now fit the Plate (with adjustment) at the center of the structure, using Flat Head Allen Screws 8×16mm on the side of the plate with holes with cavity, screw to the threads in the profile. Repeat the procedure, mirroring on the other side of the rig.

**05**

First, fit the "L" shape plates on the top of the side profiles using the Allen Screws 8×16mm with 8mm Washers, aligning to the "T" nuts from Step 01. Fit the Side Plates inside, use Allen Screw 8×16mm with 8mm Washers on the threads present on the plates themselves.



Place the 40×40mm and 40×80mm profiles as in the picture, insert "T" nuts on the top slots and fit your pedals using Allen Screws 8×16mm (for pedals with unthreaded holes) OR "T" nuts at the outer slots for pedals with threaded holes, fitting them using Corner brackets, screw using Allen 8×16mm and Allen M6×20mm screws with 6 mm Washers to the pedals.

08

Using Allen Screws 8×16mm with 8mm Washers, fit the wheel mount between the adjustment plates. For model "A", fit your Direct Drive using Allen Screws 8×16mm and 8mm washers. For model "B", fit using Allen Screws 6×20mm. For model "C" for Fanatec DD's, first place the stems and then screw it directly the the side of your Direct Drive. Use M8×16mm for Podium DD1 e DD2 and M6×20mm para bases CSL DD.

