

Versa Lift - Auto-Shutter Installation Guide ¹

These instructions apply to all Versa Lift Models 24 with lift openings dimensioned 22½" x 46½". If your model number or opening size is different from this, contact BPG for assistance before proceeding.

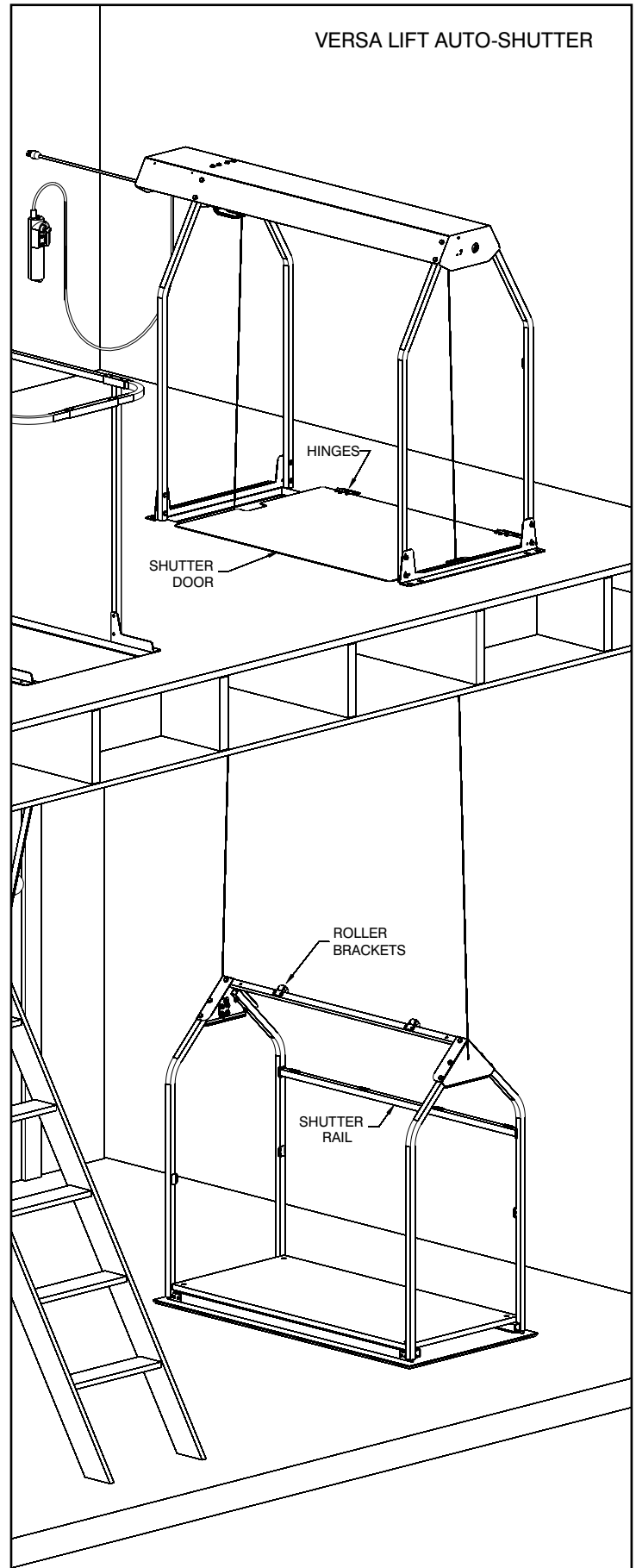
Auto Shutter - Automatic Safety Closure Door

This accessory for the Versa Lift is recommended whenever the lift is installed in living or working areas of a home or business where the lift is potentially accessible to persons, children, or pets. For example, any place other than an attic that can only be accessed by a pull-down ladder.

⚠ WARNING This guide is an addendum to the Versa Lift Installation Guide and the Versa Lift Owners Manual and is not intended as a substitute for them. Before operating the Versa Lift, please read the Versa Lift Owners Manual for critical safety information and correct operating procedures.

⚠ WARNING Never step on the shutter door. It is not designed to hold your weight! The shutter door is gravity operated, so it does not come down forcefully. However, when the shutter door is raised by the lifting platform, it is raised forcefully by the full power of the lift mechanism. Therefore, never place your extremities or other body parts near the shutter door when the lift is in operation. Never place items of any kind on the shutter door, as they will be thrown from the door when the platform is raised or they may become lodged in the lift mechanism.

⚠ DANGER ! The auto-shutter door does not make the Versa Lift safe for children or small animals. Children or pets should be prevented from access to the Versa Lift at all times by a locked door. The door key must remain in your possession or must be safely stored where children cannot get to it. Children should also be warned of the dangers of playing on or around the Versa Lift. The door should only be unlocked when the lift is in use. During such times that the door is unlocked to use the lift, children and pets should be closely supervised by an adult.



Versa Lift - Auto-Shutter Installation Guide ²

I. UNPACKING:

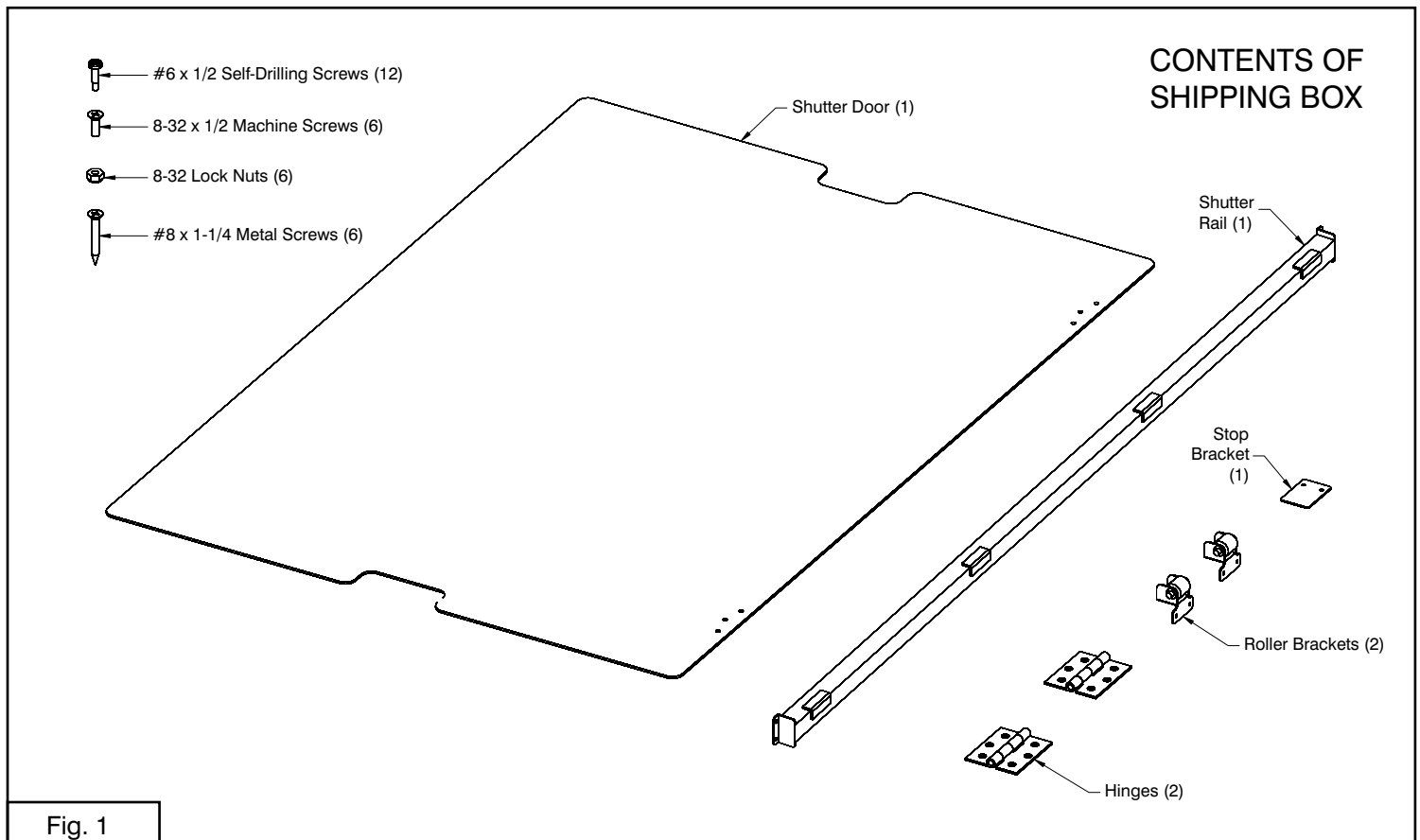
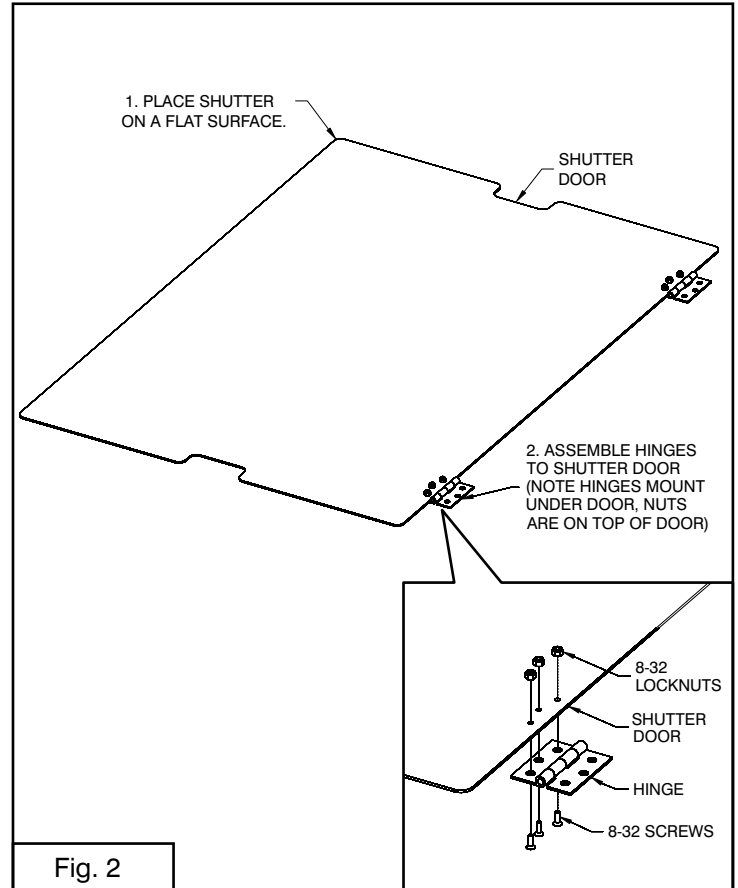
Unpack the components of the Auto-Shutter kit carton and check the contents against those listed in Fig. 1 below. If you are missing any of the parts listed, contact BPG for replacement parts before starting installation.

II. AUTO-SHUTTER INSTALLATION:

Step 1. Place the shutter door on a clean flat surface. locate the hinges (2), 8-32 screws (6), and 8-32 locknuts (6) as shown in Fig. 2 Inset.

Step 2. Use a screwdriver and a wrench or pliers to install the hinges onto the shutter door as detailed in Fig. 2 and Fig. 2 Inset. Install the screws up through the hinge and then through the shutter door, then secure with a locknut. Note: The hinges mount under the door, the screws install from underneath, and the locknuts must be on top.

(Installation is continued on following page.)



Versa Lift - Auto-Shutter Installation Guide ³

AUTO-SHUTTER INSTALLATION: (Cont.)

Step 3. Lower the lifting platform part way so that the top rail of the platform frame is a few inches below the floor level as shown in Fig. 3 below. Unplug the power cord.

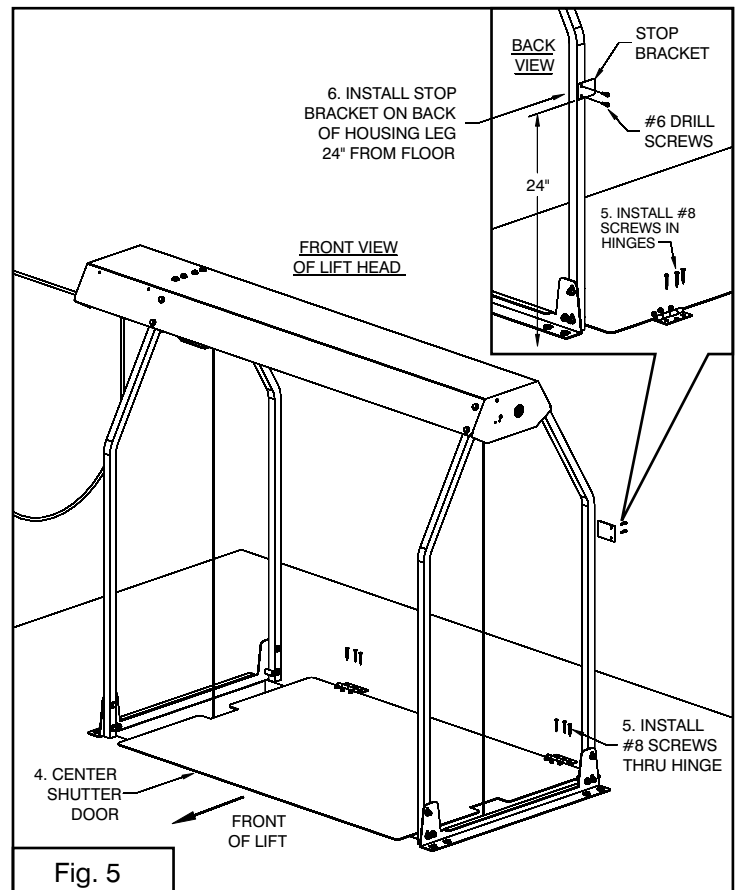
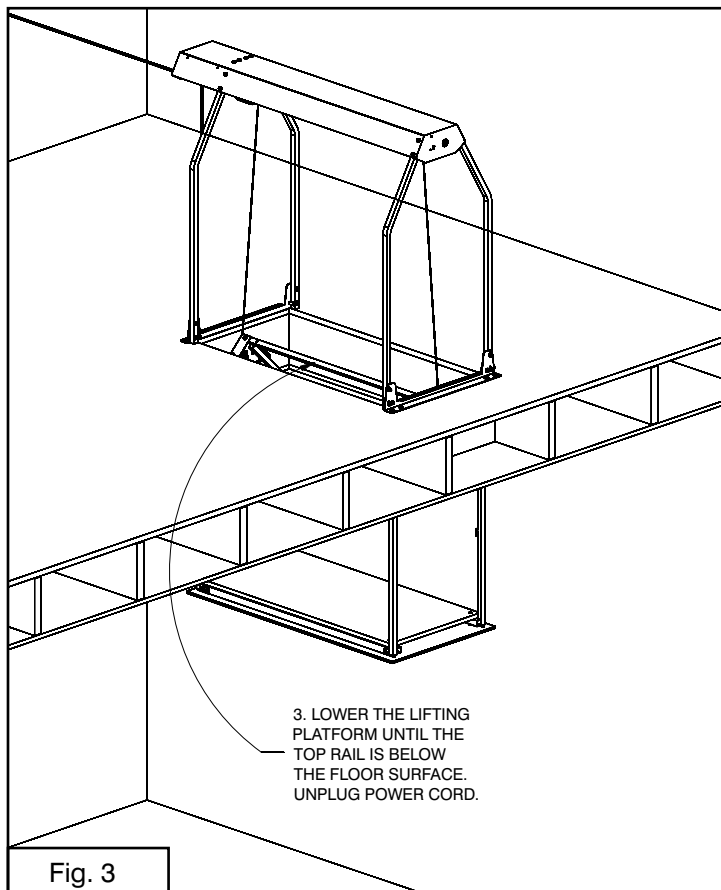
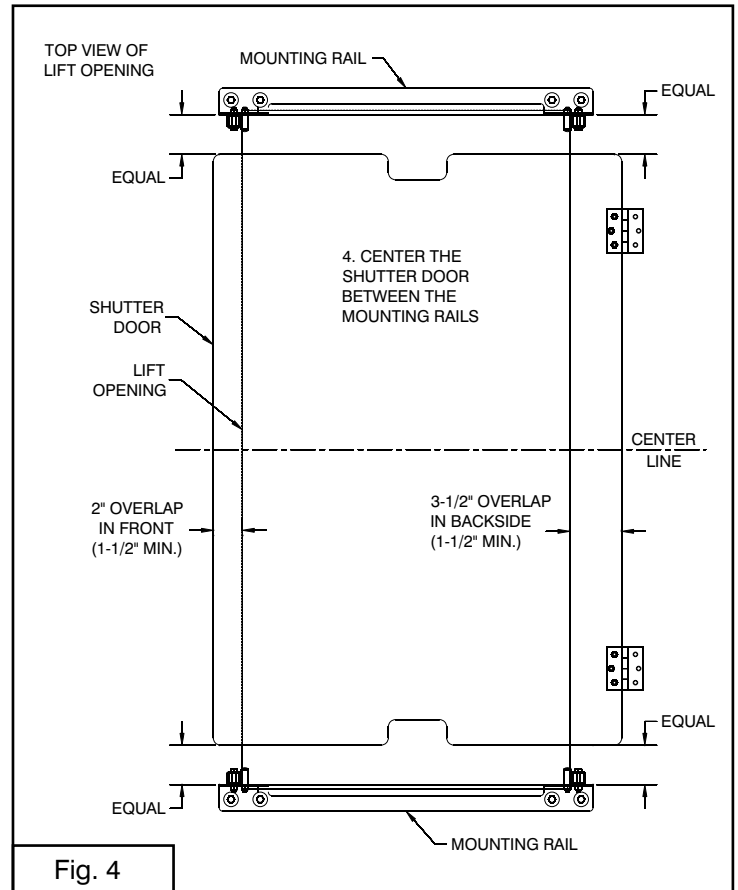
Step 4. Center the shutter door over the lift opening as shown in Figs. 4 and 5. **The door must be accurately centered (side-to-side) between the mounting rails to work correctly.** The ideal front-to-back position (Fig. 4) is with a 2" overlap in front and a 3½" overlap in back. If needed the door can be shifted forward or backward slightly, but neither the front or back overlap should ever be less than 1½"!

NOTE: If installed in a closet, be sure the shutter door will clear the closet door (shutter cannot extend under the closet door or hit the closet door).

Step 5. Install the #8 screws (6) to secure the hinges to the flooring (Fig. 5 and inset).

Step 6. Install the stop bracket onto the back side of one housing leg 24" from the floor using #6 drill-point screws (2) as shown in Fig. 5 Inset. Use tape to hold the stop bracket in place while installing screws.

(Installation is continued on following page.)



Versa Lift - Auto-Shutter Installation Guide ⁴

AUTO-SHUTTER INSTALLATION: (Cont.)

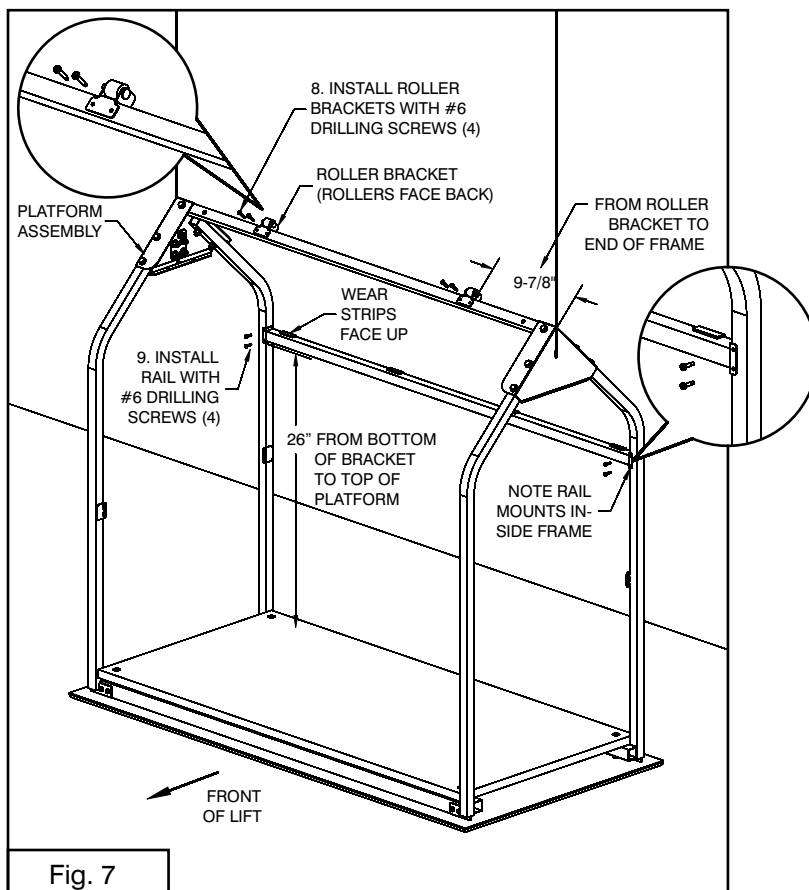
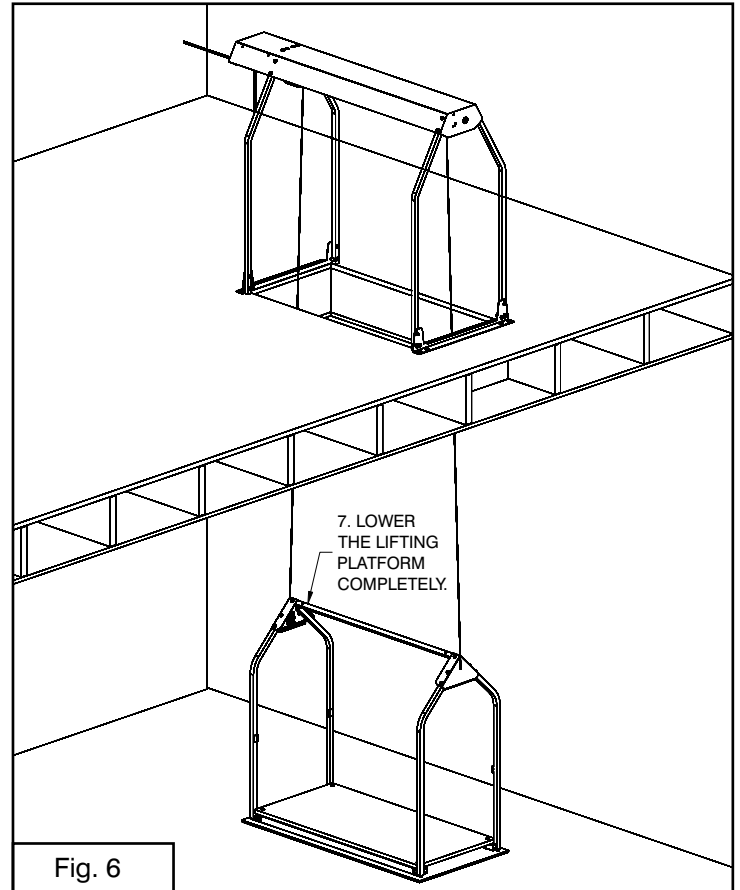
Step 7. Plug in the lift and lower the platform all the way to the floor below (Fig. 6). Unplug the power cord.

Step 8. Measure 9-7/8" from the outside of the lifting platform frame at each end and make a mark on the top rail (Fig. 7). Align the outer edge of each roller bracket to the mark as shown. Install the roller brackets onto the top rail using #6 drill-point screws (4) as shown in Fig. 7 and Fig. 7 Inset. Please note that the roller faces the back side (shutter side) of the lift.

Step 9. Measure 26" from the platform surface up the inside of each back leg and make a mark as shown in Fig. 7. Mark both back legs. Position the shutter rail between the legs with the flanges facing forward (Fig. 7 Inset) and the bottom edges aligned to your marks. Secure the rail with tape while you install the #6 drill-point screws (4) thru the holes in the rail brackets and into the legs.

Congratulations, Your Installation is Complete.

(Please see the next page for Shutter Operation.)



SHUTTER DOOR OPERATION

The Auto-Shutter automatically deploys to a horizontal position as the lifting platform is lowered. The shutter door covers the opening to help prevent items from accidentally falling through the opening when the platform is down. The shutter door is gravity operated and is lightweight tempered aluminum, so it does not come down forcefully. However, when the shutter door is raised by the lifting platform, it is raised forcefully by the full power of the lift mechanism. Therefore, never place objects on the door and never place your foot, leg, or other body parts above or around the shutter door when the lift is in operation.

1. When the lifting platform is in the raised position, the shutter door leans against the rail on the lifting platform frame (Fig. 7). The stop bracket (Fig. 5 Inset) keeps the shutter door from tipping over backwards.
2. As the lifting platform is lowered through the lift opening, the shutter door is lowered by the rollers on the platform top rail (Fig. 8).
3. As the platform proceeds downward, the shutter door comes to rest on the floor in front of the lift opening and substantially closes the lift opening (Fig. 9).

